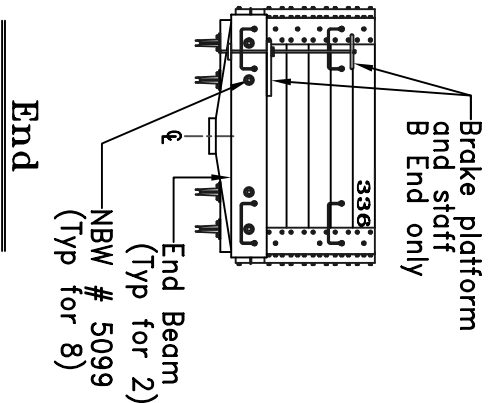


( Elevation )



( Elevation )

**Bill of Material**

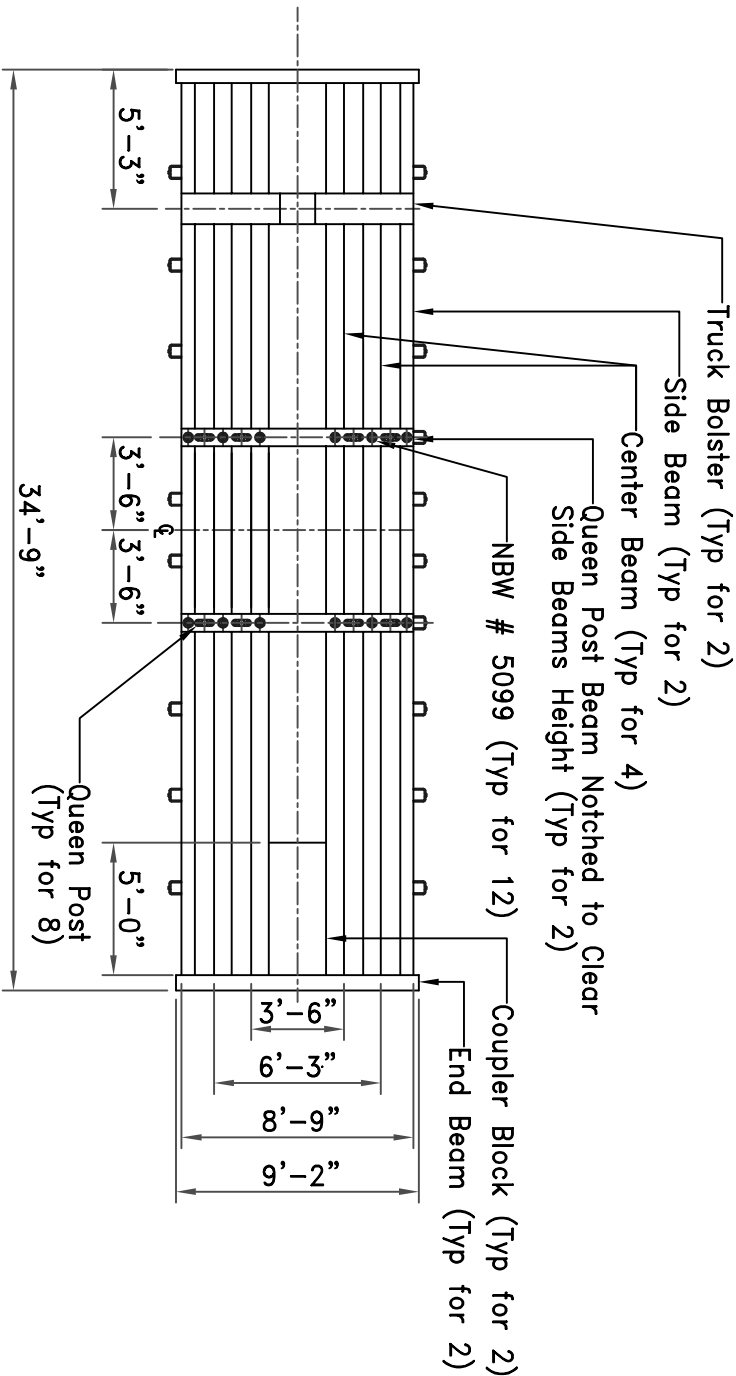
- Framing Materials:**
- 6 - 8"x8"x 34'-3" long center beams
  - 2 - 6"x12"x34'-3" long side beams
  - 2 - 6"x16"x9'-2" long end beams
  - 2 - 8"x8"x8'-9" long queen post beams
  - 2 - 8"x2'-2"x5' long coupler block
  - 2 - 8'-9"long x1' high bolster
  - 10 - 2"x10" x 32'-6" long side boards
  - 10 - 2"x10" x 8'-5" long end boards
  - 1 - 2"x14"x 8'-9" long B end brake seat
  - 52 - 2"x8"x9'-2" long decking (trim for stakes)

- Hardware:**
- 40 - Grandt Line NBW #5045
  - 20 - Grandt Line NBW #5099
  - 8 - 10" Grandt Line Queen Posts #5053
  - 1 - Grandt Line High Side Gon Kit #5002
  - 4 - Grandt Line Stirrup Steps #5130
  - 4 - Grandt Line Turnbuckles #5039
  - 20 - 18" Wide 6" Drop Grabs (Tichy)
  - 200 Scale ft 15 lb test .015 Fishing Line for truss rods
  - 1 - Cal Scale KB Brake Hardware set installed per kit instructions

**Trucks:**  
Kadee Archbar Trucks

**Paint:**  
Floquil Tuscan Red

**Lettering:**  
Champ & Various



( Plan View )

NOTES:  
**CW 34'-9" 330 Class Gon**

**Elevations & Details**

DRAWN BY:	CWRailman	DRAWING NO.	B-CW-RR-137	REV.	1
SCALE:	1/87	DATE:	04/29/13		