

Bill of Material

- Framing Materials:**
- 6 - 8"x8"x 34'-6" long center beams
 - 2 - 6"x12"x34'-6" long side beams
 - 2 - 6"x16"x9'-2" long end beams
 - 2 - 8"x8"x8'-9" long queen post beams
 - 2 - 8"x2'-2"x5' long coupler block
 - 2 - 8'-9" long x1' high bolster
 - 10 - 2"x10" x 33'-0" long side boards
 - 10 - 2"x10" x 8'-5" long end boards
 - 1 - 2"x14"x 8'-9" long B end brake seat
 - 52 - 2"x8"x9'-2" long decking (trim for stakes)

Hardware:

- 36 - Grandt Line NBW #5045
- 20 - Grandt Line NBW #5099
- 8 - 10" Grandt Line Queen Posts #5053
- 1 - Grandt Line High Side Gon Kit #5002
- 4 - Grandt Line Stirrup Steps #5130
- 4 - Grandt Line Turnbuckles #5039
- 18 - 18" Wide 6" Drop Grabs (Tichy)
- 200 Scale ft 15 lb test .015 Fishing Line for truss rods
- 1 - Cal Scale KB Brake Hardware set installed per kit instructions

Trucks:

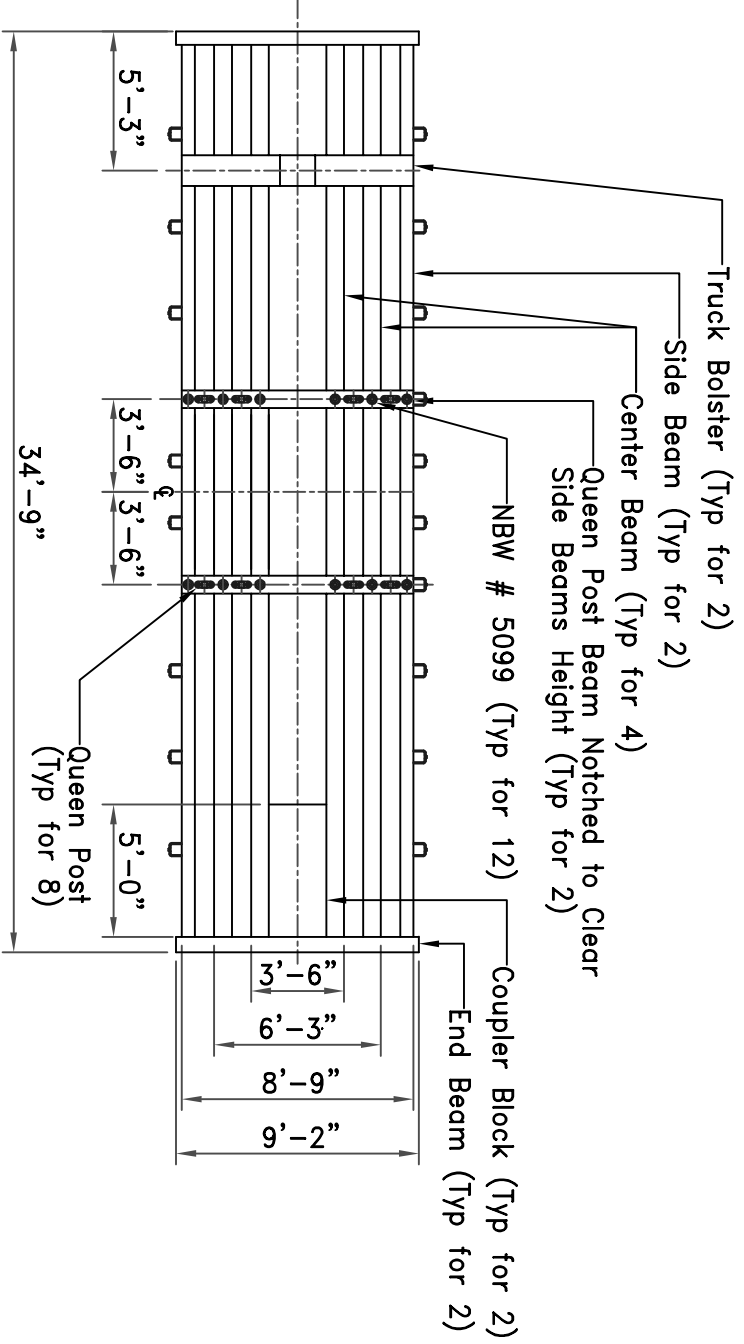
Kadee Archbar Trucks

Paint:
Floquil Tuscan Red

Lettering:
Champ & Various

(Elevation)
Side

(Elevation)
End



(Plan View)
Bottom

NOTES:

CW 34'-9" 340 Class Gon

Elevations & Details

DRAWN BY:	CWRailman
SCALE:	1/87
DATE:	04/29/13

DRAWING NO.	B-CW-RR-136
REV.	1