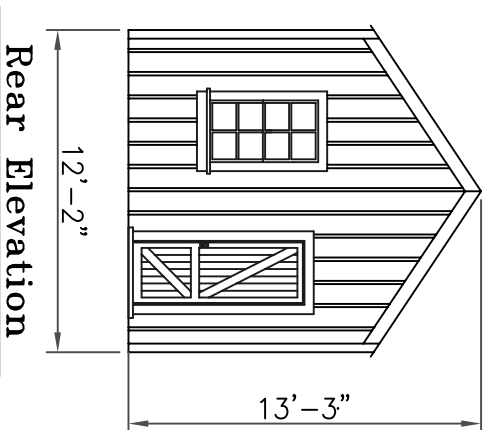
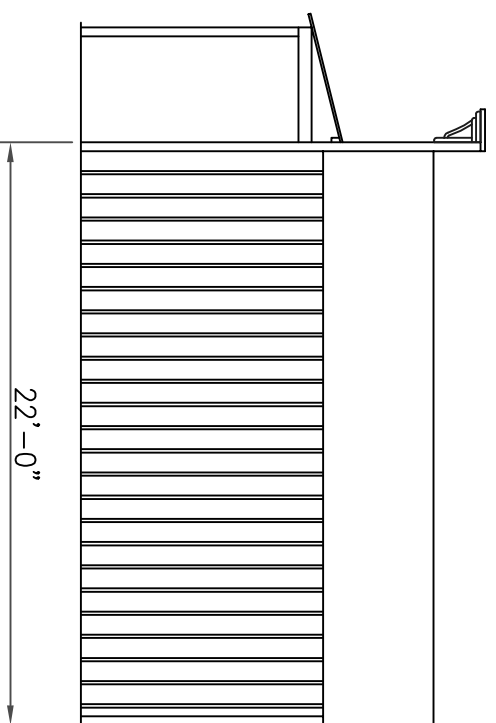


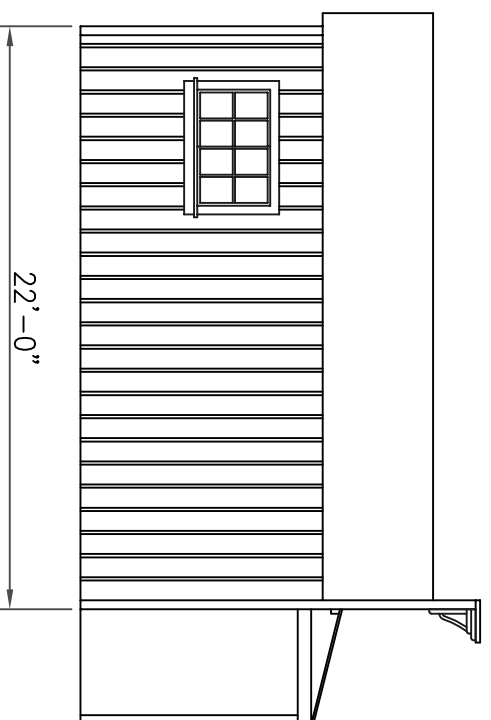
**Front Elevation**  
( Porch Omitted for Clarity )



**Rear Elevation**



**Side Elevation**



**Side Elevation**

**BILL OF MATERIALS**

Siding Materials:  
 1 - 4" Lap Siding (3.5"x24"x3/32"thick sheet)  
 1 - 10" Board and Batten siding (3.5"x24"x3/32"thick sheet)

Window and Door Castings:  
 2 - Grandt Line Station Windows 30"x69" #5060 (Modified)  
 1 - Grandt Line Double Hung Window #5030  
 1 - Grandt Line Sliding Window #5081  
 1 - Grandt Line 4 Light Door with transom #5072  
 1 - Grandt Line Door with frame #5131  
 5 - Grandt Line Corbel, 14" Wide 17 1/2" high #5151

Paint:  
 Floquil Antique White #R85 (Front Wall)  
 Floquil Lettering Grey #R130 (Doors, Windows & Trim)  
 India Ink stain (Back and Side Walls)

Framing Materials:  
 100' - 8"x8" Corner trim  
 80' - 2"x6" Front wall & roof trim  
 15' - 3" x 1"-8" Front wall trim cap  
 20' - 4" x 4" Porch Posts  
 20' - 2" x 6" Porch Canopy framing  
 1 - Interior bracing (3/16" x 3/16" x 24")

Roofing Materials:  
 Campbell Corrugated Metal

NOTES:

**Post Office**

**Elevations & Details**

DRAWN BY: **CWRailman**  
 SCALE: **1/87**

DATE: **04/25/11**  
 DRAWING NO. **B-CW-STRUCT-194**  
 REV. **1**